

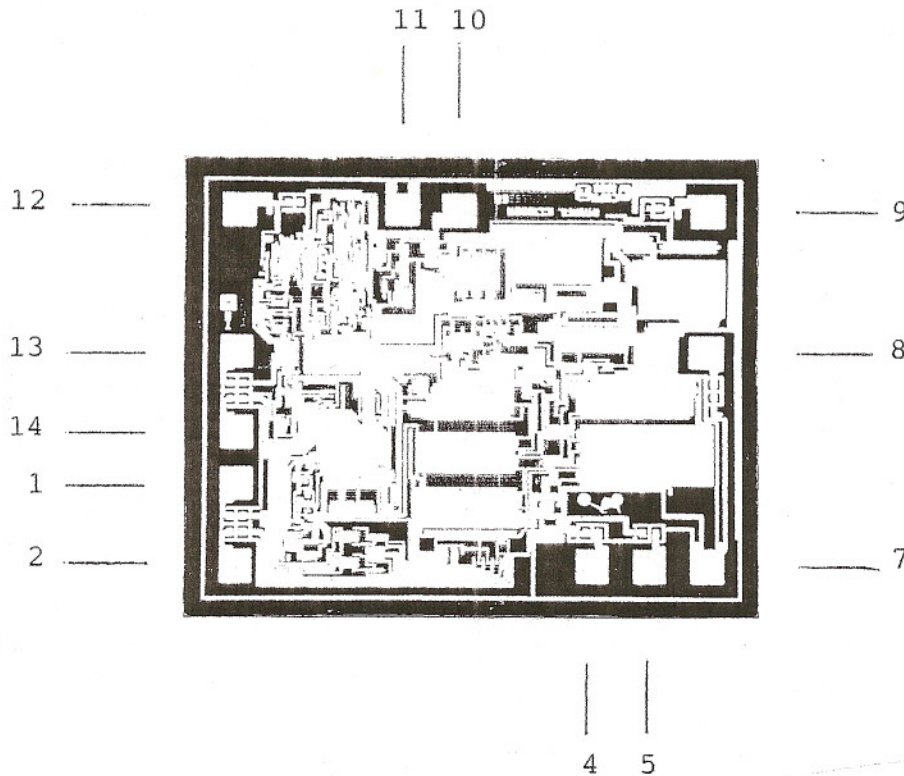


# Sierra Components, Inc.

2222 Park Place Building 3 Suite E • Minden, Nevada 89423

Phone: 775.783.4940 Fax: 775.783.4947

Chip back potential is the level which bulk silicon is maintained by on-chip connection, or it is the level to which the chip back must be connected when specifically stated below. If no potential is given the chip back should be isolated.



**Top Material: Aluminum**  
**Backside Material: Silicon**  
**Bond Pad Size: .004"**  
**Backside Potential:**  
**Mask Ref:**

**APPROVED BY: CD**

**DIE SIZE : .070"X .089"**

**DATE: 9/6/06**

**MFG: Intersil**

**THICKNESS: .014"**

**P/N: ICL7650**